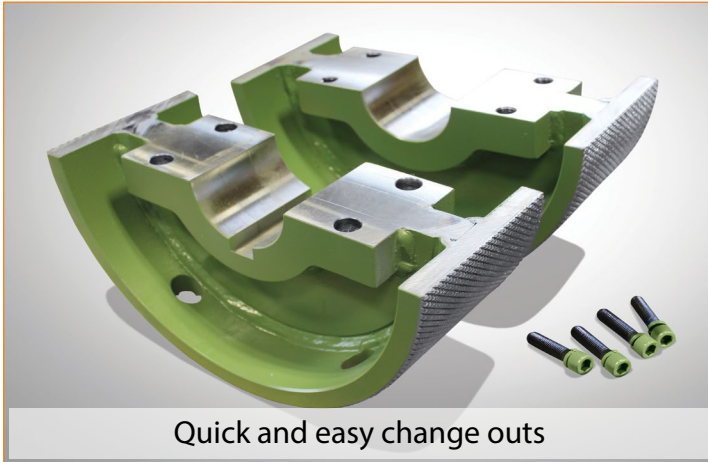




SPLIT FEED ROLL SYSTEM



Quick and easy change outs

NEW AND IMPROVED DESIGN

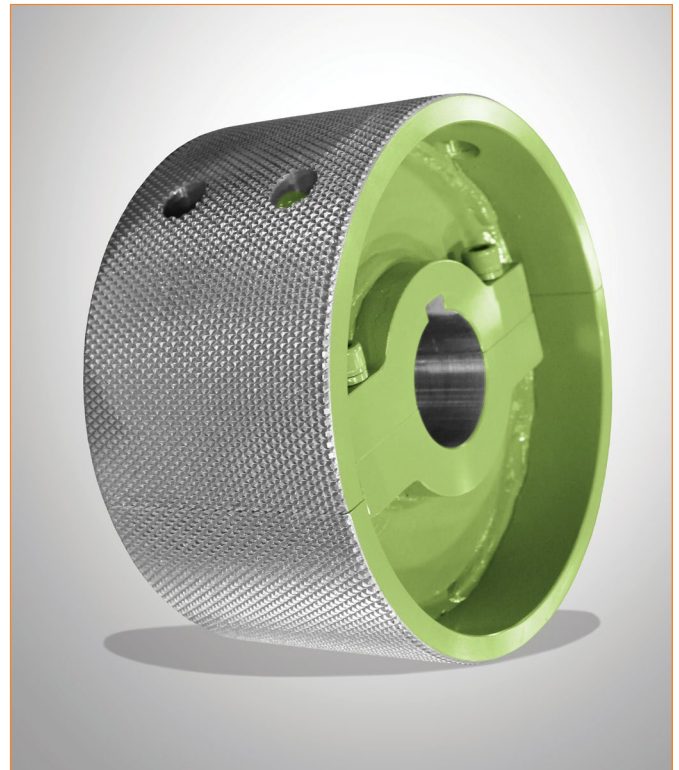
As an alternative to the currently used clamshell and solid roll systems, Murray Latta Progressive Machine has developed a new Split Roll System, available for all planer applications.

ADVANTAGES

- * Quicker change outs (no yoke, bearing or cap removal), simply undo the bolts and replace the roll
- * Economical repairs
- * Longer bearing life
- * Can be custom made for any application
- * Rolls available in varied lengths and diameters
- * Can replace any feed roll system

SPLIT FEED ROLL SYSTEM COMPONENTS

- * The Split Feed Roll System consists of split rolls and a modified shaft
- * For a 15" wide planer: (3) 5" wide rolls and (1) shaft will replace the existing solid/clamshell roll and shaft



Please contact us for more information about this and other planer mill upgrades we offer